

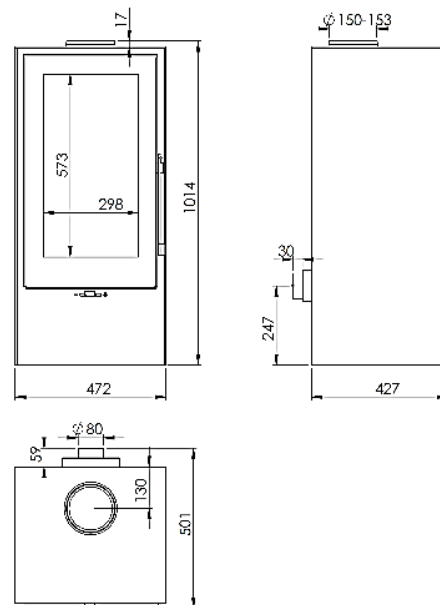


WILLOW STAND EN

WILLOW STAND EcoDesign



EAN 8426964230512
REF. KUNST 23051



MEASURES

DIMENSIONS H x W x D	1014x472x501 mm
GROSS WEIGHT	185 kg
FIREWOOD ENTRANCE	298x573 mm
SMOKE FLUE	Ø 150-153 mm
Minimum distance to combustible materials:	Vertical
Side 20 cm - Rear wall 10 cm - Front 100 cm	

CHARACTERISTICS

CAST IRON GRILL	
NOMINAL HEAT OUTPUT	8 KW
EFFICIENCY	78 %
CO EMISSIONS	0,10%
HEAT RESISTANT PAINT	800°C
CERAMIC GLASS HEAT RESISTANCE	750°C



EXTERNAL AIR INTAKE



DOUBLE STEEL BODY SHEET 6 + 3 MM



VERMICULITE LINING



PRINTED GLASS



WOOD LOGS UP TO 50 CM



240 m³

HEATING VOLUME



CLEAN GLASS SYSTEM



DOUBLE COMBUSTION



A+

